

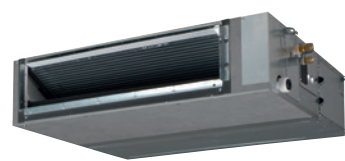


FBA-A / RXM-M9

Slimmest yet most powerful medium static pressure unit on the market

- › Combination with split outdoor units is ideal for small retail, offices or residential applications
- › Discretely concealed in the ceiling: only the suction and discharge grilles are visible
- › Slimmest unit in class, only 245mm (300mm built-in height) and therefore narrow ceiling voids are no longer a challenge
- › Optional fresh air intake
- › Lowest sound levels in the market: down to 25dBa
- › Reduced energy consumption thanks to specially developed DC fan motor and drain pump
- › Medium external static pressure up to 150Pa facilitates using flexible ducts of varying lengths
- › No optional adapter needed for DIII-connection, link your unit directly into the wider building management system
- › Possibility to change ESP via wired remote control allows optimisation of the supply air volume
- › Flexible installation: air suction direction can be altered from rear to bottom suction and choice between free use or connection to optional suction grilles
- › Standard built-in drain pump with 625mm lift increases flexibility and installation speed

R-32 BLUEVOLUTION



FBA-A



RXM42-60M9



BRC1E53A



BRC4C65 (optional)



BRP069A81 (optional)



WI-FI ADAPTOR
AVAILABLE AS AN OPTION

FBA-A / RXM-M9

R-32
BLUEEVOLUTION

Indoor Units			FBA35A	FBA50A	FBA60A
Capacity	UK Total Cooling	kW	3.32	4.89	5.57
	UK Sensible Cooling	kW	2.93	3.55	4.09
	Nominal Cooling	kW	3.4	5.0	5.7
	Nominal Heating	kW	4.0	5.5	7.0
Seasonal Efficiency (EN14825) COOLING	Energy Label		A++	A++	A+
	Pdesign	kW	3.4	5.0	5.7
	SEER		6.23	6.27	5.91
	Annual Energy Consumption	kWh	191	279	337
Seasonal Efficiency (EN14825) HEATING	Energy Label		A+	A+	A+
	Pdesign	kW	2.9	4.4	4.6
	SCOP		4.07	4.06	4.01
	Annual Energy Consumption	kWh	996	1517	1607
Nominal Efficiency	EER/COP		4.02/4.02	3.55/3.83	3.48/3.71
Air Flow Rate (Cooling)	High / Nom / Low	m³/sec	0.250/0.208/0.175	0.250/0.208/0.175	0.300/0.250/0.208
External Static Pressure	High / Nom	Pa	150/30	150/30	150/30
Dimensions	Height	mm	245	245	245
	Width	mm	700	700	1000
	Depth	mm	800	800	800
Weight		kg	28	28	35
Sound Pressure (Cooling)	High / Nom / Low	dBA	35/32/29	35/32/29	30/28/25
Sound Pressure (Heating)	High / Nom / Low	dBA	37/34/29	37/34/29	31/28/25
Sound Power (Cooling)		dBA	60	60	56

Outdoor Units			RXM35M9	RXM50M9	RXM60M9
Dimensions	Height x Width x Depth	mm	550 x 765 x 285	735 x 825 x 300	735 x 825 x 300
Weight		kg	32	47	47
Electrical Details	Power Supply		1ph	1ph	1ph
	Running Current	A	-	-	-
	Starting Current	A	-	-	-
	Max Fuse Size	A	10	15	15
Interconnection Wiring	Core / Cable Size		3+E / 1.5	3+E / 1.5	3+E / 1.5
Piping Connections	Liquid / Gas	inches (mm)	1/4 (6.4) / 3/8 (9.5)	1/4 (6.4) / 1/2 (12.7)	1/4 (6.4) / 1/2 (12.7)
Pipework	Maximum Length	m	20	30	30
	Maximum Vertical Rise	m	20	20	20
	Precharged to	m	10	10	10
	Additional charge	g/m	20	20	20
	Holding charge	kg	0.76	1.40	1.45
Sound Pressure (Cooling)	Nominal	dBA	49	48	48
Sound Pressure (Heating)	Nominal	dBA	49	49	49
Sound Power (Cooling)		dBA	61	62	63
Operating Range (Cooling)	Min / Max	°CDB	-10/46	-10/46	-10/46
Operating Range (Heating)	Min / Max	°CWB	-15/18	-15/18	-15/18
Air Flow Rate (Cooling)	Nominal	m³/sec	0.600	0.840	0.840
ECA Eligible			●	●	

Accessory Ref	Description
BRC1E53A	Premium wired remote controller (Included as standard)
BRP069A81	Wifi adaptor for connection to on-line controller
BRC2E52C	Wired simplified remote controller (without auto swing)
BRC4C65	Wireless remote controller
K.CGM	Condensing unit guard size 42-71
K.CWB90-2	Condensing unit bracket - up to size 71, max weight 90kg of ODU
K.DT1	Condensate drip tray for use with K.CWB90-2
K.RSS	Wireless room mounted temperature sensor and receiver
KLIC-DI	KNX Interface for Sky Air and VRV systems
KRCS01-4	Remote room mounted temperature sensor
KRP4A53 and UK.FB2	Unit/group adaptor PCB for remote on/off, status indication and temperature setting

Accessory Ref	Description
RS-SE	Service and configuration tool for K.RSS
RTD-10 and UK.FB2	Enhanced function PCB for Sky Air and VRV. Duty rotation, Lead Lag control and heating interlock
RTD-20 and UK.FB2	Energy control PCB for Sky Air and VRV
RTD-NET and UK.FB2	Modbus interface PCB for Sky Air and VRV
UK.RC2	Return Chamber - FBA35-50 - 2X200mm Spg
UK.RC3	Return Chamber - FBA60-71 - 2X200mm Spg
UK.RC3A	Return Chamber - FBA60-71 - 3X200mm Spg
UK.SF2	Supply flange - FBA35-50 - 2x200 Spg
UK.SF3	Supply flange - FBA60-71 - 2x200 Spg
UK.SF3A	Supply flange - FBA60-71 - 3x200 Spg

The present leaflet is drawn up by way of information only and does not constitute an offer binding upon Daikin UK. Daikin UK has compiled the content of this leaflet to the best of its knowledge. No express or implied warranty is given for the completeness, accuracy, reliability or fitness for particular purpose of its content and the products and services presented therein. Specifications are subject to change without prior notice. Daikin UK explicitly rejects any liability for any direct or indirect damage, in the broadest sense, arising from or related to the use and/or interpretation of this leaflet. All content is copyrighted by Daikin UK.


FSC

Daikin Europe N.V. participates in the Eurovent Certification programme for Air conditioners (AC), Liquid Chilling Packages (LCP), Air handling units (AHU) and Fan coil units (FCU). Check ongoing validity of certificate online: www.eurovent-certification.com or using: www.certiflash.com